

40 years of Space Technologies in the United Kingdom

Italian Embassy
4 Grosvenor Square, London

5 July 2018
6.30 p.m.



On the occasion of the celebration of Telespazio VEGA's 40 years in business in the United Kingdom, an exhibition is being held in the Italian Embassy in London.

The exhibition of eight spectacular, high definition, optical and radar satellite images will take visitors on a virtual flight over specific and really interesting areas of the British Isles.

These images are extraordinary works of art that provide a view of the United Kingdom from space, ranging from a panoramic view

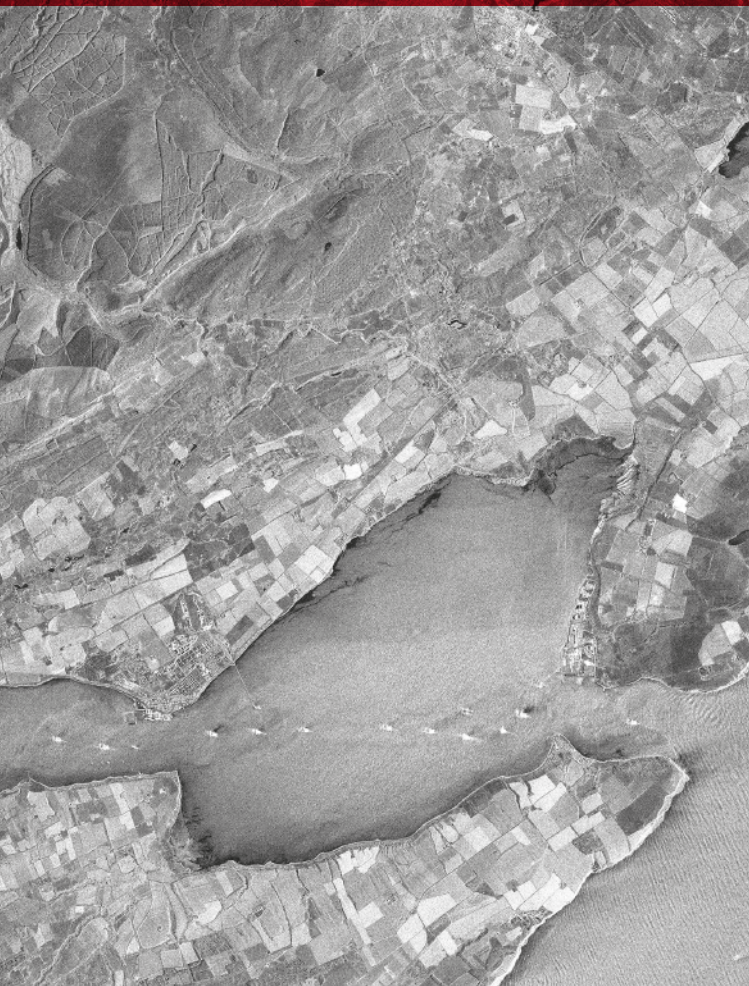


The Northwest Highlands, Scotland.
COSMO-SkyMed image © ASI,
processed and distributed by e-GEOS

of the City of London, to the prehistoric Stonehenge monument; from the Scottish Highlands to Caernarflon Castle in Wales; from the English countryside around Reading, to Birmingham's "Spaghetti Junction".

The exhibition provides food for thought about how beautiful and how fragile our planet is.

Thanks to the satellites' eyes, we can study our planet's health status, monitor changes, and protect it against the effects of climate change and man's actions.





1. London City

View of the city of London, acquired by the radar satellites of the COSMO-SkyMed constellation, which is able to obtain images in all weather conditions, even through clouds, day and night.

Satellite: COSMO-SkyMed image © ASI, processed and distributed by e-GEOS



2. Stonehenge, Wiltshire, England

One of the most famous landmarks in the UK; Stonehenge is regarded as a British cultural icon. It is a prehistoric monument in Wiltshire, England. The stones are set within earthworks in the middle of a dense complex of Neolithic and Bronze Age monuments, including several hundred burial mounds.

Archaeologists believe it was constructed from 3000 BC to 2000 BC.

Satellite: WorldView-2 image @DigitalGlobe



3. Caernarfon Castle, Wales

A Medieval fortress in Caernarfon, Gwynedd, north-west Wales cared for by Cadw, the Welsh Government's historic environment service. In 1969 Caernarfon Castle was used for the investiture of the present Prince of Wales.

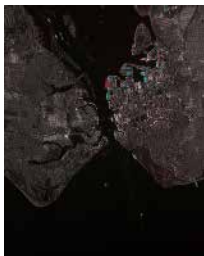
Satellite: Deimos-2 image © Deimos Imaging, an UrtheCast company



4. Edinburgh Castle, Scotland

Edinburgh Castle is a historic fortress which dominates the skyline of the city of Edinburgh, Scotland, from its position on the Castle Rock.

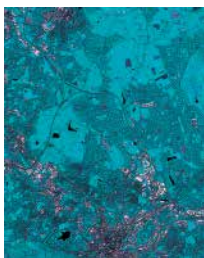
Satellite: Deimos-2 image © Deimos Imaging, an UrtheCast company



5. Portsmouth, England

Port city in Hampshire, on Portsea Island, has been an important naval port for centuries. The port of Portsmouth remains one of the most important military quays of the British Royal Navy.

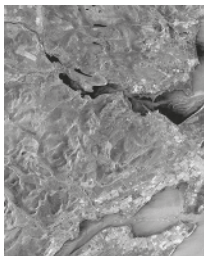
Satellite: COSMO-SkyMed image © ASI, processed and distributed by e-GEOS



6. Spaghetti Junction, Birmingham, England

Spaghetti Junction is a nickname sometimes given to a complicated intertwined road traffic interchange that resembles a plate of spaghetti. The term was originally used to refer to the Gravelly Hill Interchange on the M6 motorway in Birmingham.

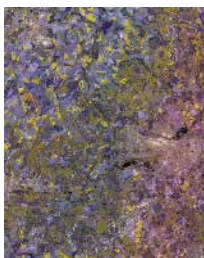
Satellite: Deimos-2 image © Deimos Imaging, an UrtheCast company



7. The Northwest Highlands, Scotland

The Caledonian Canal, which extends from Loch Linnhe in the south-west, splitting the area from the rest of the country.

Satellite: COSMO-SkyMed image © ASI, processed and distributed by e-GEOS



8. Agriculture fields, Reading, England

Like other agronomic zones, these fields are affected by cloud cover persistence. Integrated Earth Observation Data, both optical and SAR, can provide with the necessary synoptic and homogenous information layers aimed at monitoring crop growth, estimation of crop surfaces and production at regional or more local scale.

Satellite: COSMO-SkyMed image © ASI, processed and distributed by e-GEOS



Italian Embassy
London

Images courtesy of e-GEOS



Telespazio VEGA UK
350 Capability Green,
Luton, Bedfordshire
LU1 3LU, United Kingdom

Tel +44 (0) 1582 399 000
www.telespazio-vega.com