

## FIRST LOOK AT EARTH FROM THE COSMO-SKYMED FM3 SATELLITE

*Just days after launch, the first images are received from the third satellite of the second generation of the Earth Observation programme promoted by the Italian Space Agency and the Ministry of Defence, involving national industry with Leonardo, Thales Alenia Space, Telespazio and e-GEO*

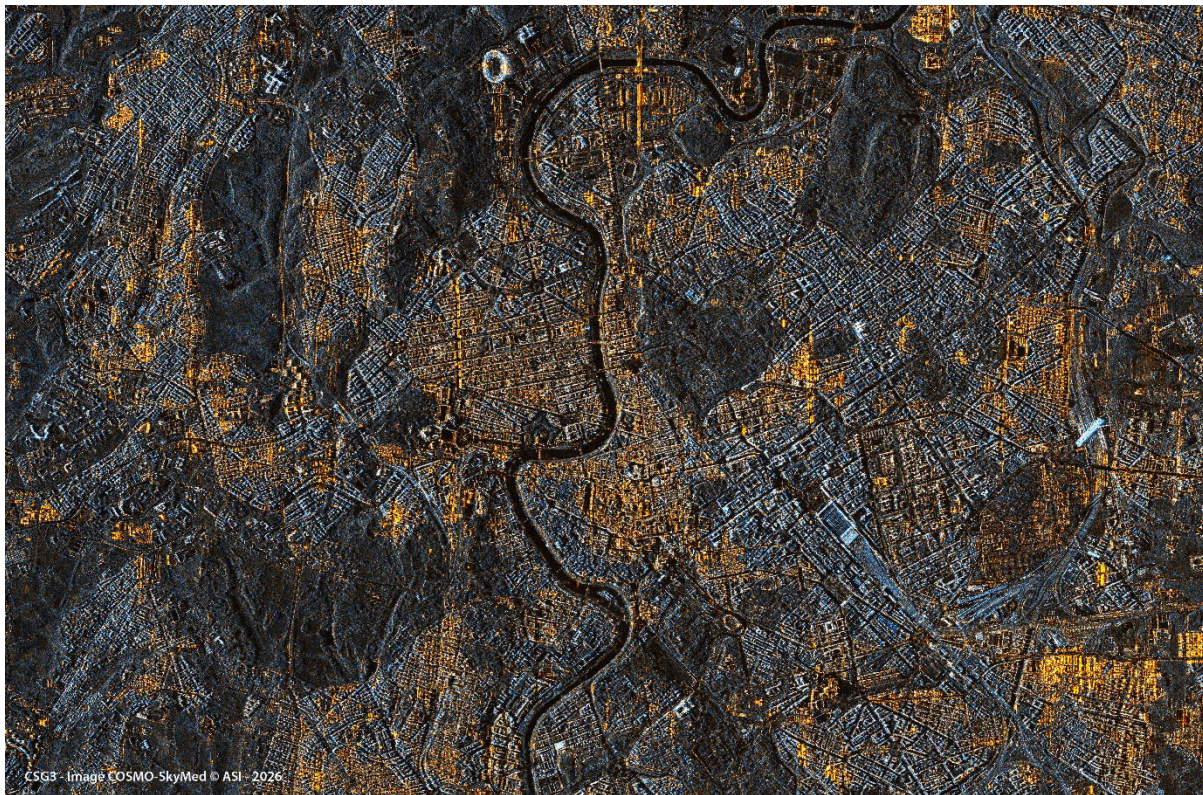
**Rome, 19 January 2026** - CSG FM3 opens its eyes on Earth. Just a few days after launch, the first acquisitions from the new second-generation satellite of the **COSMO-SkyMed constellation** have been received. COSMO-SkyMed is the Earth Observation programme promoted by the **Italian Space Agency (ASI)** and the **Ministry of Defence**. These initial results confirm the expected performance and full functionality of the satellite.

Among the first images acquired are views of the cities of **Rome** and **Vancouver**, as well as a striking scene of the Padma River in **Bangladesh**.

Launched on 2 January 2026 from Vandenberg Space Force Base in California, CSG FM3 is in excellent operational condition. The commissioning and functional verification phase has been successfully completed, including the deployment of the solar panels, the antenna, and the activation of the main onboard units.

During this phase, Telespazio, in collaboration with Thales Alenia Space Italy, handled the planning of imaging requests, the transmission of commands, the verification of the SAR sensor's correct operation, and the acquisition and processing of raw data at ASI's Space Centre in Matera.

In-orbit testing and fine-tuning activities are now continuing, essential steps toward bringing CSG FM3 into full operational service. The new satellite will further strengthen Italy's Earth Observation capabilities, supporting civil and institutional applications ranging from environmental protection and emergency management to territorial security



**Rome** - The “Eternal City” as seen by the new second-generation COSMO-SkyMed satellite. The image clearly shows St Peter’s Basilica, the Colosseum, Termini and Tiburtina railway stations, Villa Borghese, Villa Ada and the Olympic Stadium.





***Vancouver** - The image shows the city of Vancouver and its skyline. Several ships are clearly visible off the Port of Vancouver, the largest in Canada and one of the most important in North America, crucial for trade, cruise traffic, especially to Alaska, and container shipping.*





**Bangladesh** - A detail of the Padma River, a branch of the Ganges, in Bangladesh. The image captures the river's variability, its shifting channels and the sandbanks that continually emerge along its course.

High-definition images can be downloaded at the following [link](#)



---

## The COSMO-SkyMed SAR Constellation

The COSMO-SkyMed programme is based on a constellation of satellites equipped with X-band Synthetic Aperture Radar (SAR) and is considered one of the most innovative Earth Observation programmes in the world. It is funded by the Italian Space Agency and the Ministry of Defence. Designed as a dual-use mission with both civil and military applications, COSMO-SkyMed monitors the environment, climate and land, sea and coastal areas with maximum precision, providing essential data for security, emergency management and environmental protection in all weather conditions, day and night. Thanks to the CSG satellites' acquisition capabilities, it is possible to carry out stability analyses and precise change detection across a wide range of applications, from urban planning, mining, maritime and oil & gas to forestry and many others.

The COSMO-SkyMed constellation currently includes four fully operational satellites: two first-generation (CSK) and two second-generation (CSG), with the third second-generation satellite, CSG-FM3, currently in its post-launch verification phase. To date, acquisitions from the entire constellation have produced a catalogue of 4.3 million images.

The COSMO-SkyMed system is the result of collaboration across Italy's national industry, with Leonardo and its joint ventures Thales Alenia Space and Telespazio, and the contribution of a significant number of small and medium-sized enterprises. In particular, Thales Alenia Space built the satellites and is responsible for the mission, the system and the space segment; Telespazio developed the ground segment and manages the operations of the entire system, including the mission control centre; Leonardo provides high-precision onboard technologies and systems; and e-GEOS is the exclusive distributor for the commercialisation of COSMO-SkyMed data.

With the second generation of COSMO-SkyMed, ASI and the Ministry of Defence are strengthening Italy's international leadership in radar Earth Observation and providing essential tools to address global challenges related to the environment and security. The CSG system confirms the excellence of Italy's space industry and its ability to integrate cutting-edge technology, innovation and strategic vision.

ASI Media Relations | E-mail: [stampa@asi.it](mailto:stampa@asi.it) | Tel: +39 06 8567 432 / 887 / 655