

love
planet
earth

2021

SUSTAINABILITY AND DEVELOPMENT

Compatible needs for the future of the planet

The 2021 edition of Love Planet Earth, the photo calendar from Telespazio and e-GEOS, sees the collaboration of National Geographic. Love Planet Earth 2021 presents a veritable journey into sustainability in various corners of the world, from South Tarawa, to Germany and to the Bosco Verticale complex in Milan. This journey grapples with the major issues of the Sustainable Development Goals of the United Nations 2030 Agenda. Key issues addressed include fighting poverty, eliminating hunger and taking action against climate change, to name but a few. These are all common goals, that they concern all countries and all people, worldwide.

No one is excluded and no one must be left behind on the road leading the world towards sustainability.

SUSTAINABLE DEVELOPMENT GOALS

The appropriate steps have been taken to minimize this calendar's environmental footprint.
All materials used comply with environmental regulations.

- The paper used is 100% FSC (Forest Stewardship Council) certified;
- The pages have not been coated with plastic, so they are fully recyclable;
- We have selected a spiral design that enables us to save one kilometer of metal.



in collaboration with
Copyright © 2020 National Geographic Partners, LLC. All Rights Reserved.
Copyright © 2020 Italian edition National Geographic Partners, LLC.
All Rights Reserved.
National Geographic and the Yellow Border Design are registered trademarks
of National Geographic Society and used under license.

AFFORDABLE AND CLEAN ENERGY

A solar panel in front of huts at a remote indigenous village in the Amazon forest in Peru. Renewable energy sources are often sufficient to meet daily needs in small traditional communities.

Charlie Hamilton James / Nat Geo Image Collection



**AFFORDABLE
AND CLEAN ENERGY**

Breu, Peru.

Cosmo-SkyMed Image © ASI (2020).

Processed and distributed by e-GEOS

January

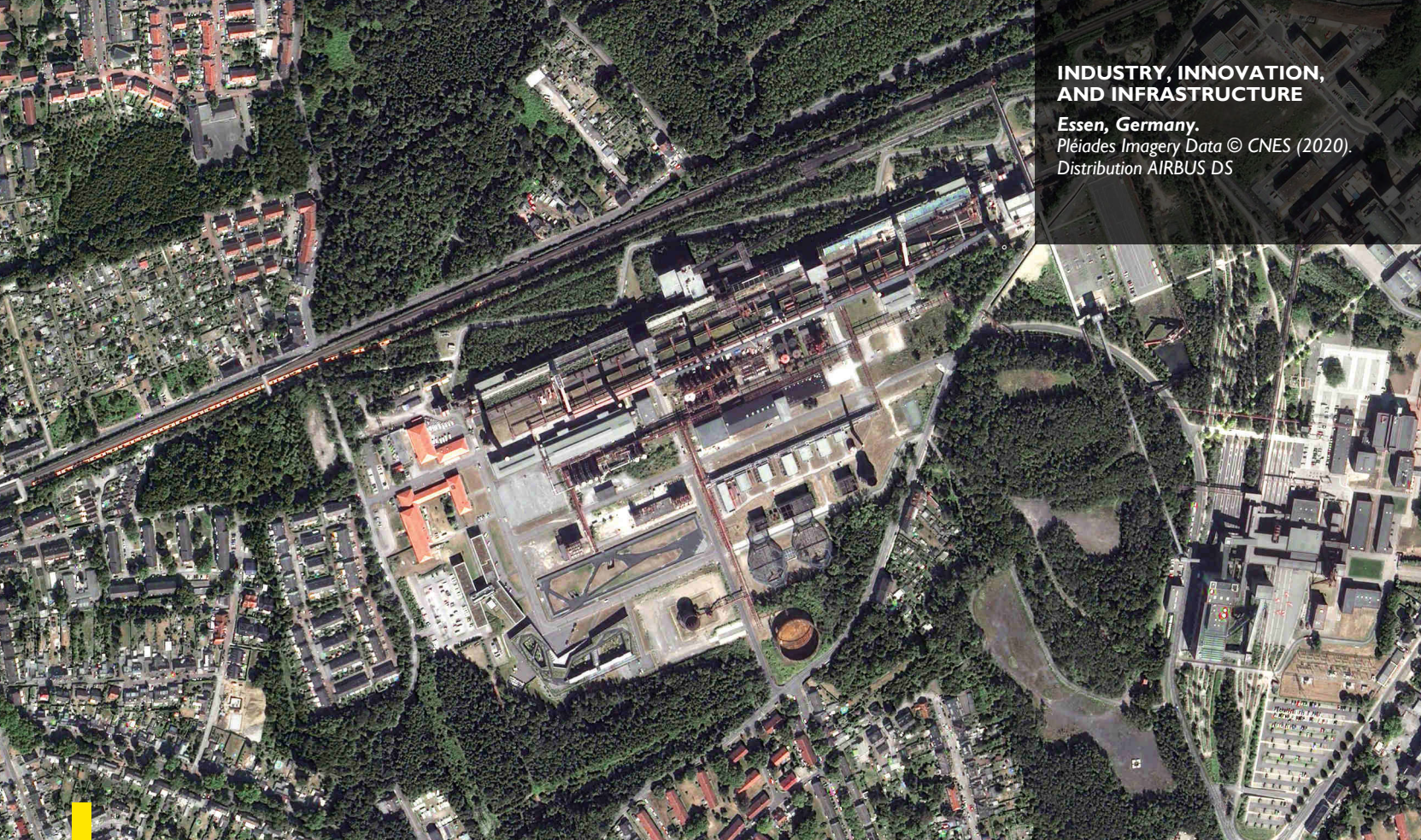
| | | | | | | | | | | | | | | | | | | | | | | | | | | | | | | |
|---|---|---|---|---|---|---|---|---|----|----|----|----|----|----|----|----|----|----|----|----|----|----|----|----|----|----|----|----|----|----|
| 1 | 2 | 3 | 4 | 5 | 6 | 7 | 8 | 9 | 10 | 11 | 12 | 13 | 14 | 15 | 16 | 17 | 18 | 19 | 20 | 21 | 22 | 23 | 24 | 25 | 26 | 27 | 28 | 29 | 30 | 31 |
| F | S | S | M | T | W | T | F | S | S | M | T | W | T | F | S | S | M | T | W | T | F | S | S | M | T | W | T | F | S | S |

INDUSTRY, INNOVATION, AND INFRASTRUCTURE

The Skate Park in the Zollverein Coal Mine Industrial Complex, a large former industrial site in the city of Essen, North Rhine-Westphalia, Germany. A UNESCO World Heritage site since 2001, it includes a museum, numerous parkland areas and other public facilities.

Jochen Tack / Alamy





**INDUSTRY, INNOVATION,
AND INFRASTRUCTURE**

Essen, Germany.

Pléiades Imagery Data © CNES (2020).

Distribution AIRBUS DS

February

| | | | | | | | | | | | | | | | | | | | | | | | | | | | |
|---|---|---|---|---|---|---|---|---|----|----|----|----|----|----|----|----|----|----|----|----|----|----|----|----|----|----|----|
| 1 | 2 | 3 | 4 | 5 | 6 | 7 | 8 | 9 | 10 | 11 | 12 | 13 | 14 | 15 | 16 | 17 | 18 | 19 | 20 | 21 | 22 | 23 | 24 | 25 | 26 | 27 | 28 |
| M | T | W | T | F | S | S | M | T | W | T | F | S | S | M | T | W | T | F | S | S | M | T | W | T | F | S | S |

RESPONSIBLE CONSUMPTION AND PRODUCTION

After sheets of clear plastic trash have been washed in the Buriganga River in Bangladesh, a man spreads them out to dry before they are sold to a recycler. Recycling waste thereby becomes an opportunity for work in the community.

Randy Olson / Nat Geo Image Collection





**RESPONSIBLE
CONSUMPTION AND
PRODUCTION**

*Dhaka, Bangladesh.
Sentinel-2 © ESA (2020).
Processed by e-GEOS*



March

| | | | | | | | | | | | | | | | | | | | | | | | | | | | | | | |
|---|---|---|---|---|---|---|---|---|----|----|----|----|----|----|----|----|----|----|----|----|----|----|----|----|----|----|----|----|----|----|
| 1 | 2 | 3 | 4 | 5 | 6 | 7 | 8 | 9 | 10 | 11 | 12 | 13 | 14 | 15 | 16 | 17 | 18 | 19 | 20 | 21 | 22 | 23 | 24 | 25 | 26 | 27 | 28 | 29 | 30 | 31 |
| M | T | W | T | F | S | S | M | T | W | T | F | S | S | M | T | W | T | F | S | S | M | T | W | T | F | S | S | M | T | W |

A young girl in a white headscarf and brown dress is carrying two large yellow water jugs. She is standing near a well in a refugee camp. In the background, a donkey is standing near the well, and a group of people is gathered nearby. The scene is set in a dry, open landscape with a few trees and a clear sky.

CLEAN WATER AND SANITATION

A child leaving a well with jugs of water at a refugee camp in Nyala, Darfur, Sudan. Access to constantly available sources of clean drinking water is still a problem for many communities, particularly in areas dogged by conflict.

Raul Touzon / Nat Geo Image Collection



**CLEAN WATER
AND SANITATION**

Nyala, Darfur, Sudan.
SPOT-7 Imagery Data
© AIRBUS DS (2020)

April

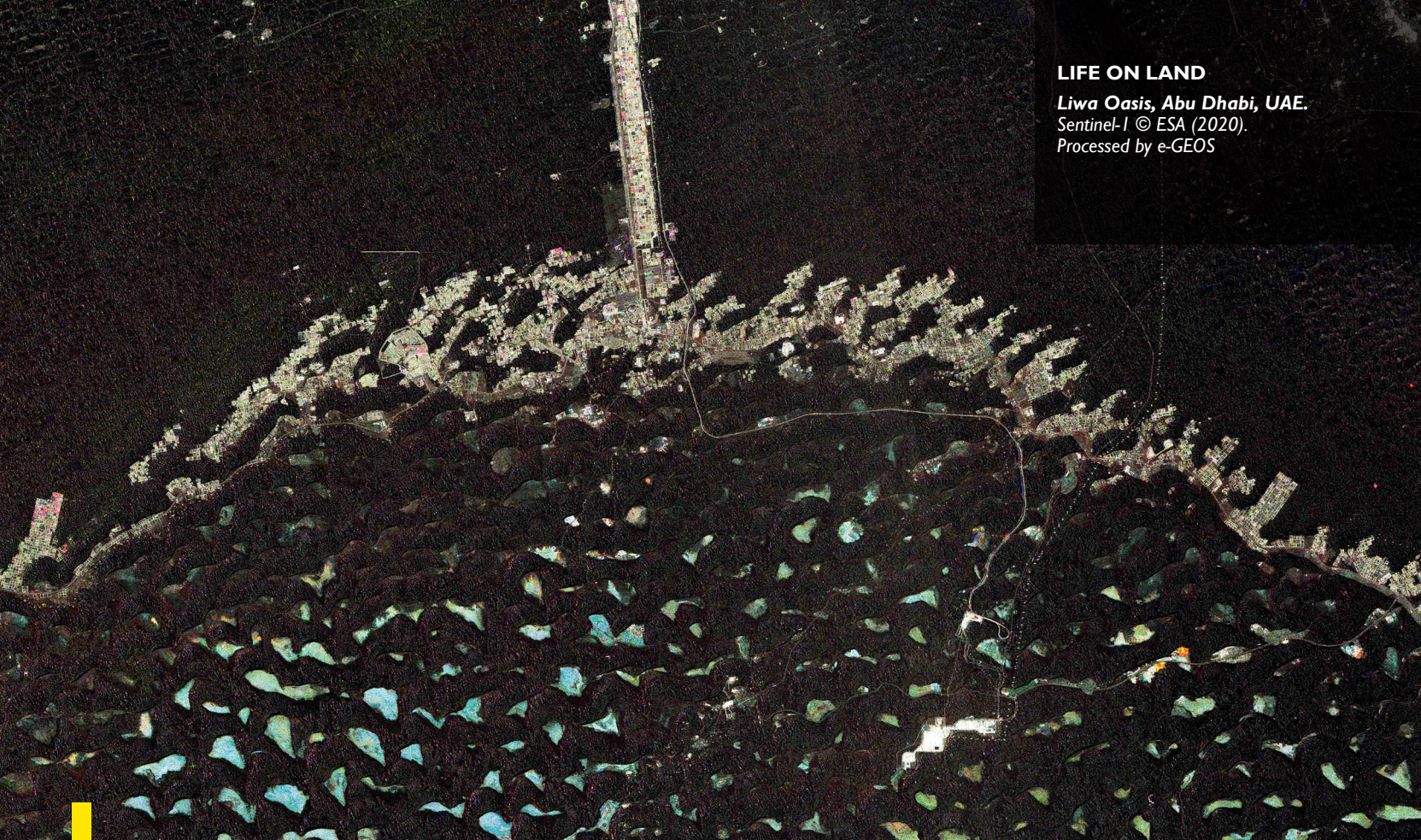
| | | | | | | | | | | | | | | | | | | | | | | | | | | | | | |
|---|---|---|---|---|---|---|---|---|----|----|----|----|----|----|----|----|----|----|----|----|----|----|----|----|----|----|----|----|----|
| 1 | 2 | 3 | 4 | 5 | 6 | 7 | 8 | 9 | 10 | 11 | 12 | 13 | 14 | 15 | 16 | 17 | 18 | 19 | 20 | 21 | 22 | 23 | 24 | 25 | 26 | 27 | 28 | 29 | 30 |
| T | F | S | S | M | T | W | T | F | S | S | M | T | W | T | F | S | S | M | T | W | T | F | S | S | M | T | W | T | F |

LIFE ON LAND

Palm tree plantation near the oasis of Liwa, in the United Arab Emirates. Reforestation projects are proving to be an effective strategy in warding off desertification resulting from climate change.

Charles Gibson / Getty Images





LIFE ON LAND

Liwa Oasis, Abu Dhabi, UAE.

Sentinel-1 © ESA (2020).

Processed by e-GEOS

May

| | | | | | | | | | | | | | | | | | | | | | | | | | | | | | | |
|---|---|---|---|---|---|---|---|---|----|----|----|----|----|----|----|----|----|----|----|----|----|----|----|----|----|----|----|----|----|----|
| 1 | 2 | 3 | 4 | 5 | 6 | 7 | 8 | 9 | 10 | 11 | 12 | 13 | 14 | 15 | 16 | 17 | 18 | 19 | 20 | 21 | 22 | 23 | 24 | 25 | 26 | 27 | 28 | 29 | 30 | 31 |
| S | S | M | T | W | T | F | S | S | M | T | W | T | F | S | S | M | T | W | T | F | S | S | M | T | W | T | F | S | S | M |

LIFE BELOW WATER

Rhythmic currents in Challenger Bay push and pull a school of Diagonal-banded Sweetlips. Coral barrier reefs are ecosystems where the loss of biodiversity is particularly significant.

David Doubilet / Nat Geo Image Collection





LIFE BELOW WATER

Great Barrier Reef, Australia.
DEIMOS-2 Image © Deimos Image
an UrtheCast Company (2020)

June

| | | | | | | | | | | | | | | | | | | | | | | | | | | | | | |
|---|---|---|---|---|---|---|---|---|----|----|----|----|----|----|----|----|----|----|----|----|----|----|----|----|----|----|----|----|----|
| 1 | 2 | 3 | 4 | 5 | 6 | 7 | 8 | 9 | 10 | 11 | 12 | 13 | 14 | 15 | 16 | 17 | 18 | 19 | 20 | 21 | 22 | 23 | 24 | 25 | 26 | 27 | 28 | 29 | 30 |
| T | W | T | F | S | S | M | T | W | T | F | S | S | M | T | W | T | F | S | S | M | T | W | T | F | S | S | M | T | W |

LIFE ON LAND

Sherpas plant tree seedlings on a reforestation project in the Khumbu region in Nepal. The involvement of the local population is of fundamental importance in ensuring the success of schemes aimed at safeguarding the environment.

Robb Kendrick / Nat Geo Image Collection





LIFE ON LAND

Khumbu Region, Nepal.

Gaofen-2 Image © China Siwei
Surveying and Mapping Technology
(2020). Distributed by SpaceWill

July

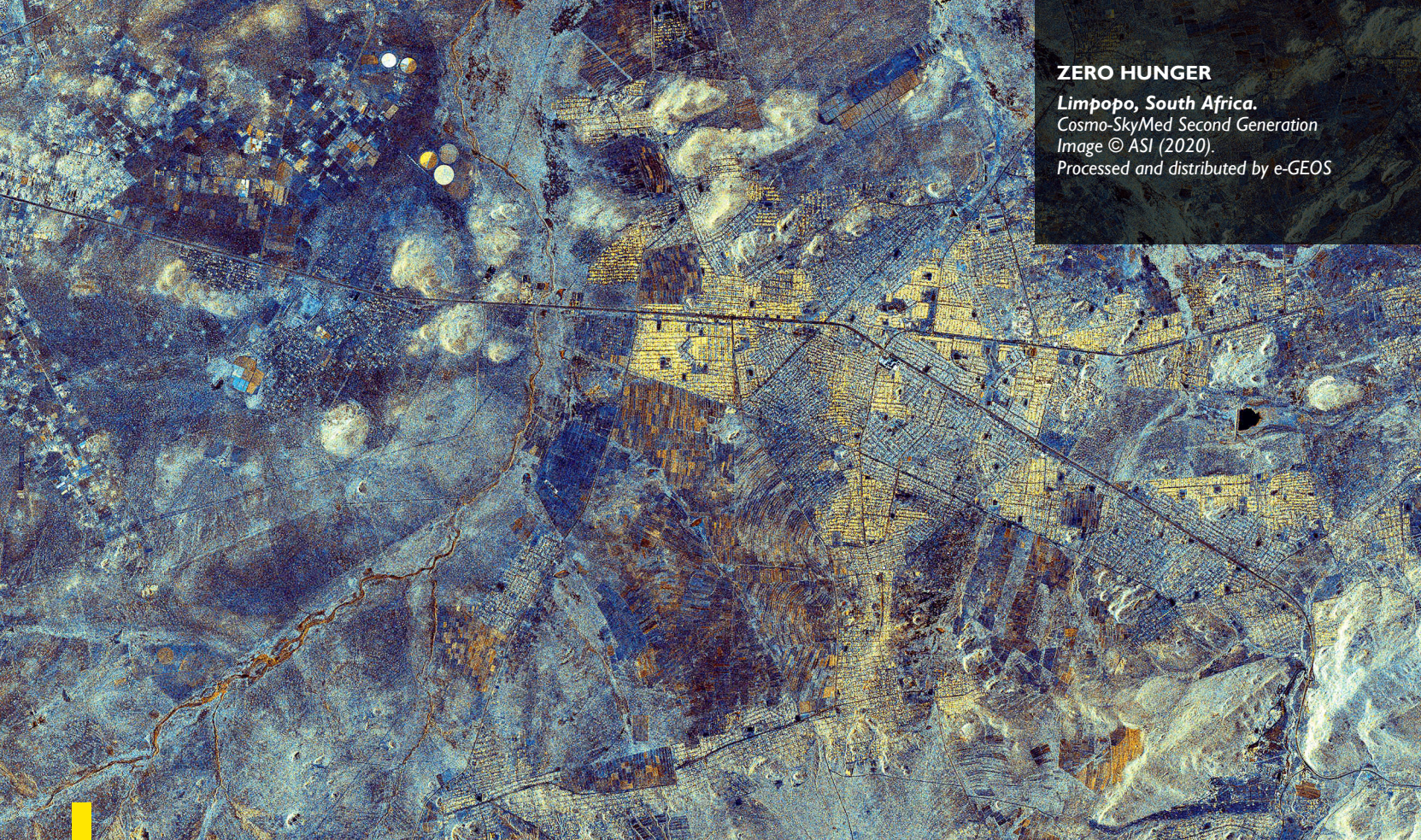
| | | | | | | | | | | | | | | | | | | | | | | | | | | | | | | |
|---|---|---|---|---|---|---|---|---|----|----|----|----|----|----|----|----|----|----|----|----|----|----|----|----|----|----|----|----|----|----|
| 1 | 2 | 3 | 4 | 5 | 6 | 7 | 8 | 9 | 10 | 11 | 12 | 13 | 14 | 15 | 16 | 17 | 18 | 19 | 20 | 21 | 22 | 23 | 24 | 25 | 26 | 27 | 28 | 29 | 30 | 31 |
| T | F | S | S | M | T | W | T | F | S | S | M | T | W | T | F | S | S | M | T | W | T | F | S | S | M | T | W | T | F | S |

ZERO HUNGER

In Hamakuya, Limpopo, South Africa, a woman stands in an agricultural plot that uses a simple but effective watering system for sustainable gardening. In fact precision irrigation provides water only where needed, thus reducing water consumption and wastage.

Gabby Salazar / Nat Geo Image Collection





ZERO HUNGER

Limpopo, South Africa.

Cosmo-SkyMed Second Generation

Image © ASI (2020).

Processed and distributed by e-GEOS

August

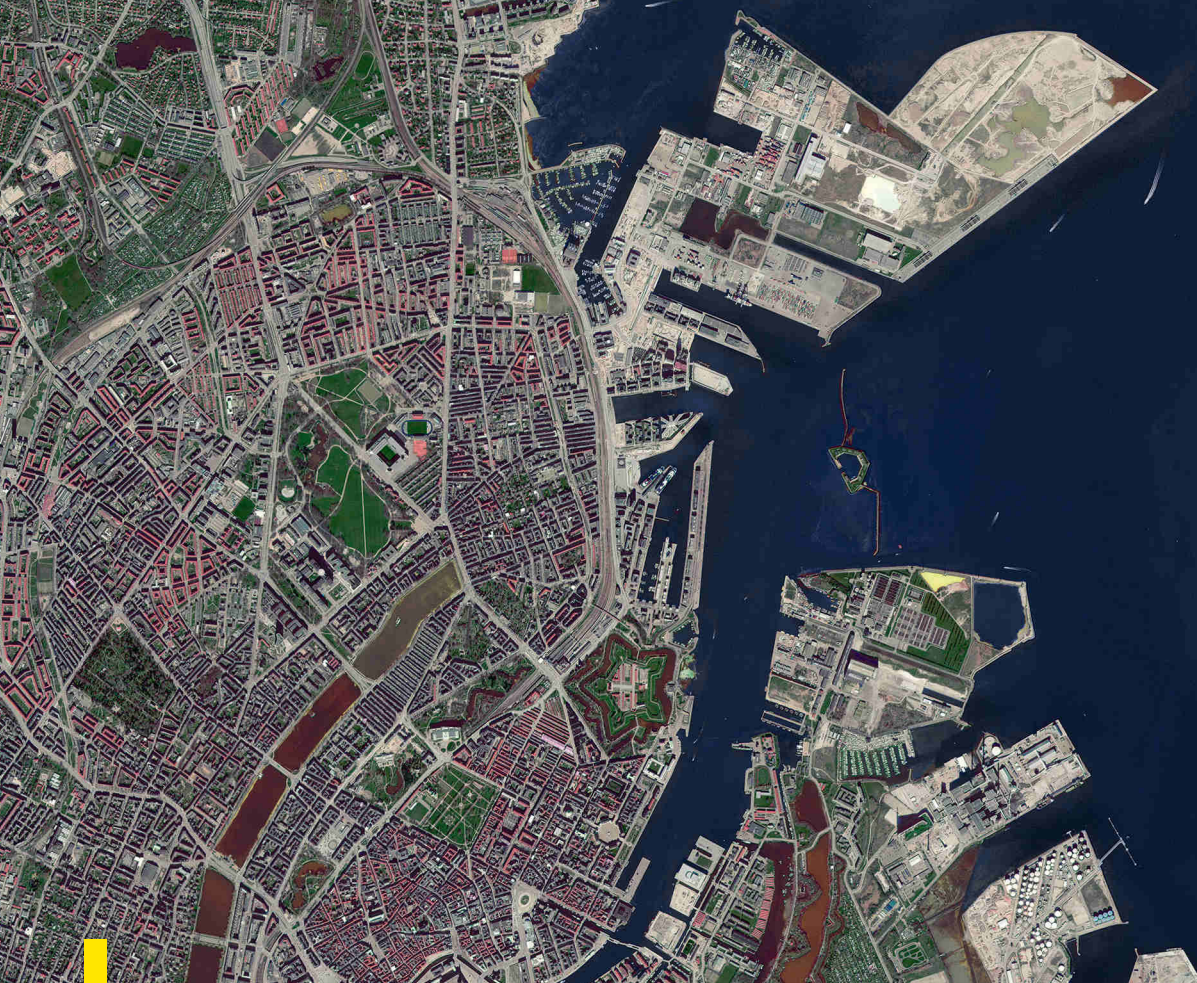
| | | | | | | | | | | | | | | | | | | | | | | | | | | | | | | |
|---|---|---|---|---|---|---|---|---|----|----|----|----|----|----|----|----|----|----|----|----|----|----|----|----|----|----|----|----|----|----|
| 1 | 2 | 3 | 4 | 5 | 6 | 7 | 8 | 9 | 10 | 11 | 12 | 13 | 14 | 15 | 16 | 17 | 18 | 19 | 20 | 21 | 22 | 23 | 24 | 25 | 26 | 27 | 28 | 29 | 30 | 31 |
| S | M | T | W | T | F | S | S | M | T | W | T | F | S | S | M | T | W | T | F | S | S | M | T | W | T | F | S | S | M | T |

SUSTAINABLE CITIES AND COMMUNITIES

Bicycles reflected in still water at Christians Brygge, Copenhagen. Widespread use of zero-emission vehicles helps to limit cities' environmental footprint even with limited investment.

Robert Harding / Nat Geo Image Collection





SUSTAINABLE CITIES AND COMMUNITIES

Copenhagen, Denmark.

SuperView-1 Image © China Siwei
Surveying and Mapping Technology
(2020). Distributed by SpaceWill

September

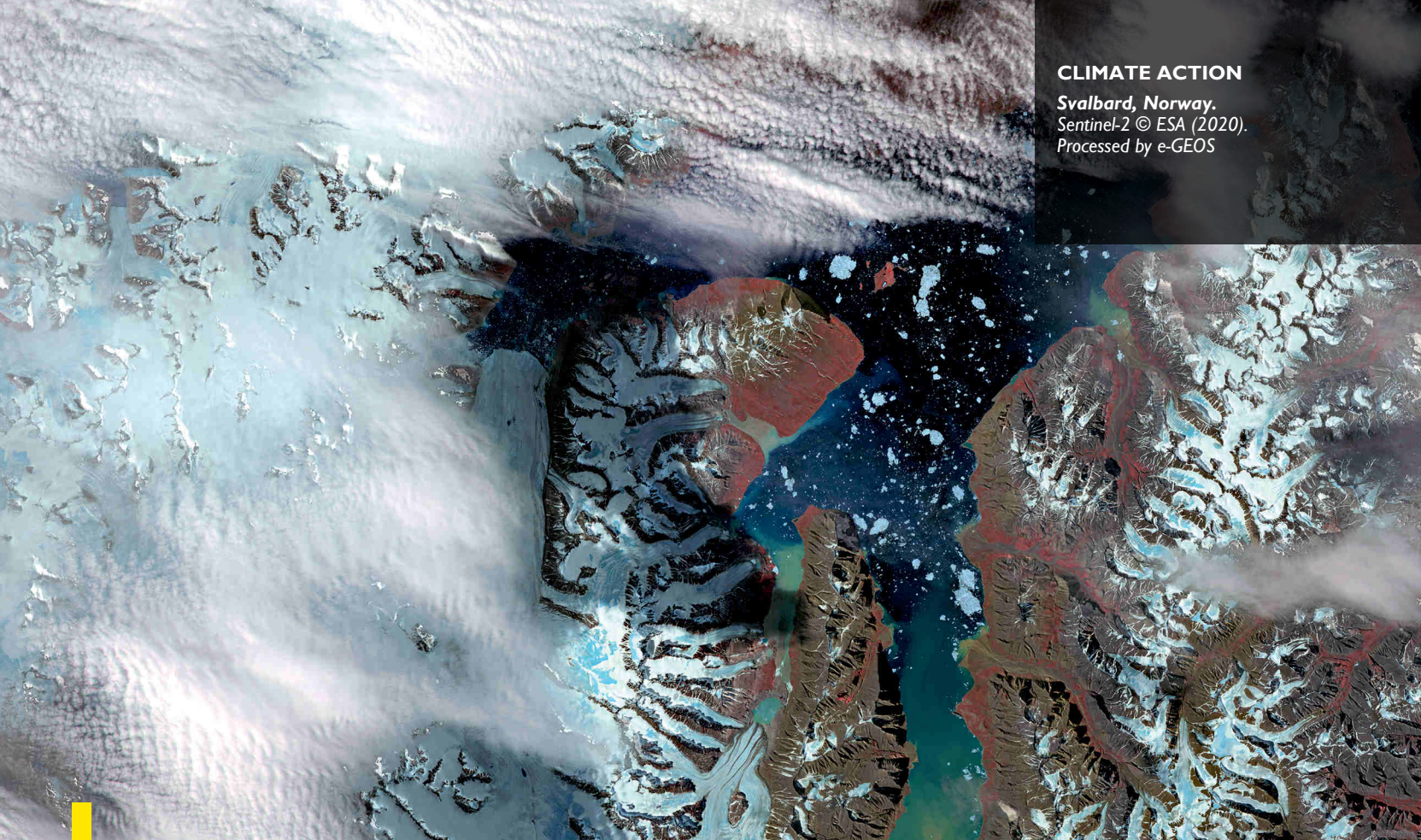
| | | | | | | | | | | | | | | | | | | | | | | | | | | | | | |
|---|---|---|---|---|---|---|---|---|----|----|----|----|----|----|----|----|----|----|----|----|----|----|----|----|----|----|----|----|----|
| 1 | 2 | 3 | 4 | 5 | 6 | 7 | 8 | 9 | 10 | 11 | 12 | 13 | 14 | 15 | 16 | 17 | 18 | 19 | 20 | 21 | 22 | 23 | 24 | 25 | 26 | 27 | 28 | 29 | 30 |
| W | T | F | S | S | M | T | W | T | F | S | S | M | T | W | T | F | S | S | M | T | W | T | F | S | S | M | T | W | T |

CLIMATE ACTION

An old water duct near Ny-Ålesund, in Svalbard, warped by subsidence. The melting of the permafrost is one of the most marked effects of climate change at these northerly latitudes.

blickwinkel / Hinrich Bäsemann / Alamy





CLIMATE ACTION

Svalbard, Norway.
Sentinel-2 © ESA (2020).
Processed by e-GEOS

October

| | | | | | | | | | | | | | | | | | | | | | | | | | | | | | | |
|---|---|---|---|---|---|---|---|---|----|----|----|----|----|----|----|----|----|----|----|----|----|----|----|----|----|----|----|----|----|----|
| 1 | 2 | 3 | 4 | 5 | 6 | 7 | 8 | 9 | 10 | 11 | 12 | 13 | 14 | 15 | 16 | 17 | 18 | 19 | 20 | 21 | 22 | 23 | 24 | 25 | 26 | 27 | 28 | 29 | 30 | 31 |
| F | S | S | M | T | W | T | F | S | S | M | T | W | T | F | S | S | M | T | W | T | F | S | S | M | T | W | T | F | S | S |

CLIMATE ACTION

Families from Kiribati's outer atolls are flocking to South Tarawa. Newcomers live in marginal areas prone to flooding by high tides. Such events are exacerbated by rising sea levels caused by climate change.

Jonas Gratzner / Getty Images





CLIMATE ACTION

South Tarawa, Kiribati.

Kompsat-3A Image © KARI (2020)

November

| | | | | | | | | | | | | | | | | | | | | | | | | | | | | | |
|---|---|---|---|---|---|---|---|---|----|----|----|----|----|----|----|----|----|----|----|----|----|----|----|----|----|----|----|----|----|
| 1 | 2 | 3 | 4 | 5 | 6 | 7 | 8 | 9 | 10 | 11 | 12 | 13 | 14 | 15 | 16 | 17 | 18 | 19 | 20 | 21 | 22 | 23 | 24 | 25 | 26 | 27 | 28 | 29 | 30 |
| M | T | W | T | F | S | S | M | T | W | T | F | S | S | M | T | W | T | F | S | S | M | T | W | T | F | S | S | M | T |

INDUSTRY, INNOVATION, AND INFRASTRUCTURE

The “vertical forest” of the Bosco Verticale complex in Milan, designed by Stefano Boeri Architetti. The move towards more sustainable cities is driving many architects to experiment with new ways of interpreting the relationship between humans and nature.

Pierluigi Palazzi / Alamy



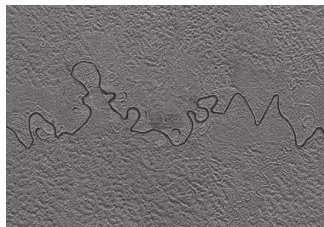


**INDUSTRY, INNOVATION,
AND INFRASTRUCTURE**

Milan, Italy.
WorldView-2 Image © DigitalGlobe
(2020)

December

| | | | | | | | | | | | | | | | | | | | | | | | | | | | | | | |
|---|---|---|---|---|---|---|---|---|----|----|----|----|----|----|----|----|----|----|----|----|----|----|----|----|----|----|----|----|----|----|
| 1 | 2 | 3 | 4 | 5 | 6 | 7 | 8 | 9 | 10 | 11 | 12 | 13 | 14 | 15 | 16 | 17 | 18 | 19 | 20 | 21 | 22 | 23 | 24 | 25 | 26 | 27 | 28 | 29 | 30 | 31 |
| W | T | F | S | S | M | T | W | T | F | S | S | M | T | W | T | F | S | S | M | T | W | T | F | S | S | M | T | W | T | F |



Breu, Peru. Cosmo-SkyMed Image © ASI (2020). Processed and distributed by e-GEOS



Essen, Germany. Pleiades Imagery Data © CNES (2020). Distribution AIRBUS DS



Dhaka, Bangladesh. Sentinel-2 © ESA (2020). Processed by e-GEOS



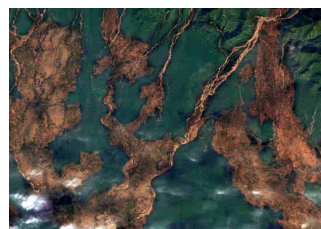
Nyala, Darfur, Sudan. SPOT-7 Imagery Data © AIRBUS DS (2020)



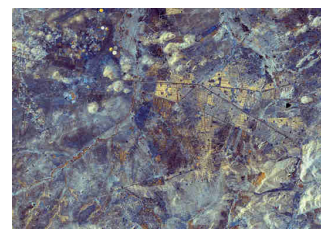
Liwa Oasis, Abu Dhabi, UAE. Sentinel-1 © ESA (2020). Processed by e-GEOS



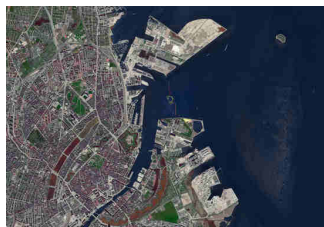
Great Barrier Reef, Australia. DEIMOS-2 Image © Deimos Image an UrtheCast Company (2020)



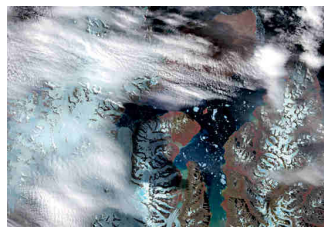
Khumbu Region, Nepal. Gaofen-2 Image © China Siwei Surveying and Mapping Technology (2020). Distributed by SpaceWill



Limpopo, South Africa. Cosmo-SkyMed Second Generation Image © ASI (2020). Processed and distributed by e-GEOS



Copenhagen, Denmark. SuperView-1 Image © China Siwei Surveying and Mapping Technology (2020). Distributed by SpaceWill



Svalbard, Norway. Sentinel-2 © ESA (2020). Processed by e-GEOS



South Tarawa, Kiribati. Komsat-3A Image © KARI (2020)



Milan, Italy. WorldView-2 Image © DigitalGlobe (2020)



in collaboration with
 Copyright © 2020 National Geographic Partners, LLC. All Rights Reserved.
 Copyright © 2020 Italian edition National Geographic Partners, LLC. All Rights Reserved.
 National Geographic and the Yellow Border Design are registered trademarks of National Geographic Society and used under license.