

**love**  
planet  
earth

**2018**

## REMOTE

We are guests of our planet and its changes are the signs of our lives,  
our culture needs or just of ourselves.

Climate changes give us evident effects of their presence,  
here on the Earth, but also from a long distance.

We observe the boundless beauty of the sea and the rising of its level and  
temperature, the unpredictable variety of nature, but also its impetuosity,  
the wonderful shapes of the deserts and their progress, forests and their  
threatened vitality, the charming dance of poles and icebergs.

We observe.

Far far away, in Space through satellites and  
far in time, through long-term data series.

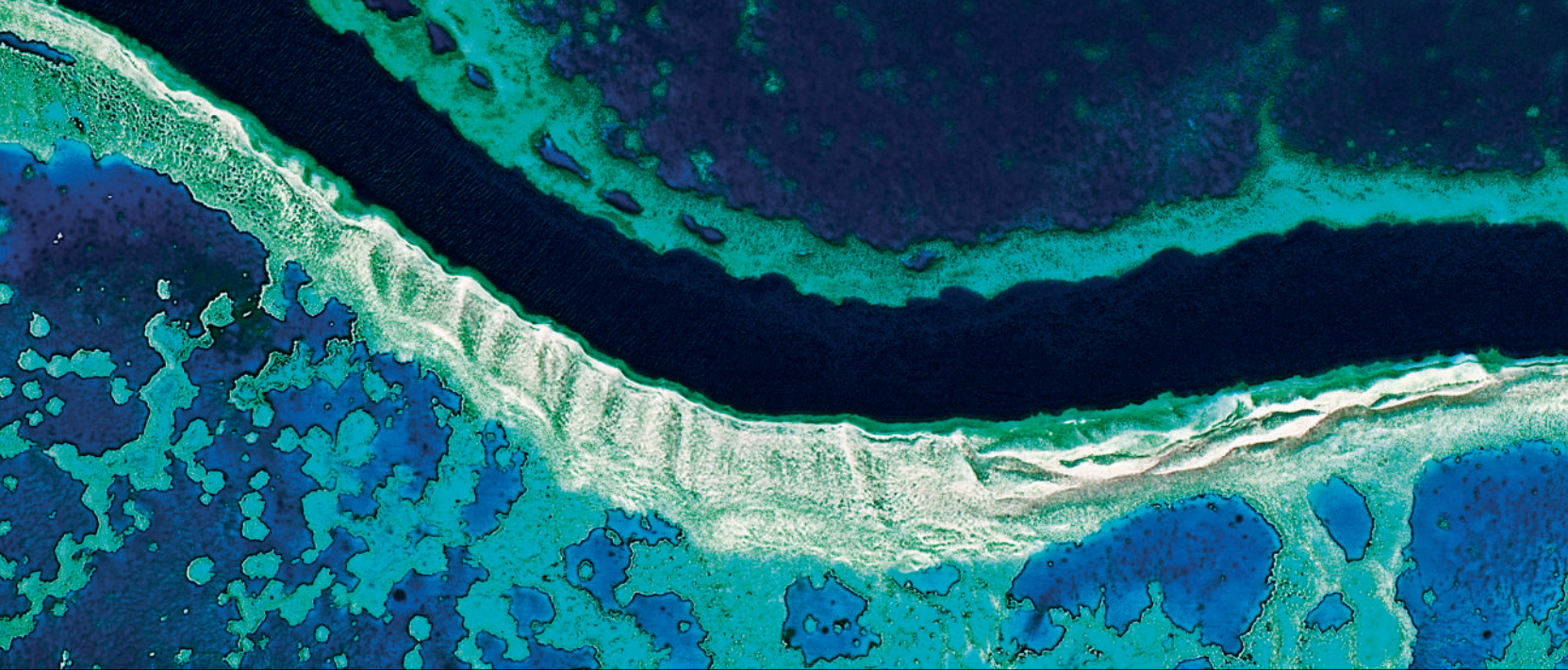
The climate is changing, we need human change, because  
"There is no Planet B" (*Ban Ki-moon*).

# love planet earth

[www.e-geos.it](http://www.e-geos.it)



e-geos  
AN ASI / TELESPAZIO COMPANY



M	T	W	T	F	S	S	M	T	W	T	F	S	S	M	T	W	T	F	S	S	M	T	W	T	F	S	S	M	T	W
1	2	3	4	5	6	7	8	9	10	11	12	13	14	15	16	17	18	19	20	21	22	23	24	25	26	27	28	29	30	31

JANUARY 2018

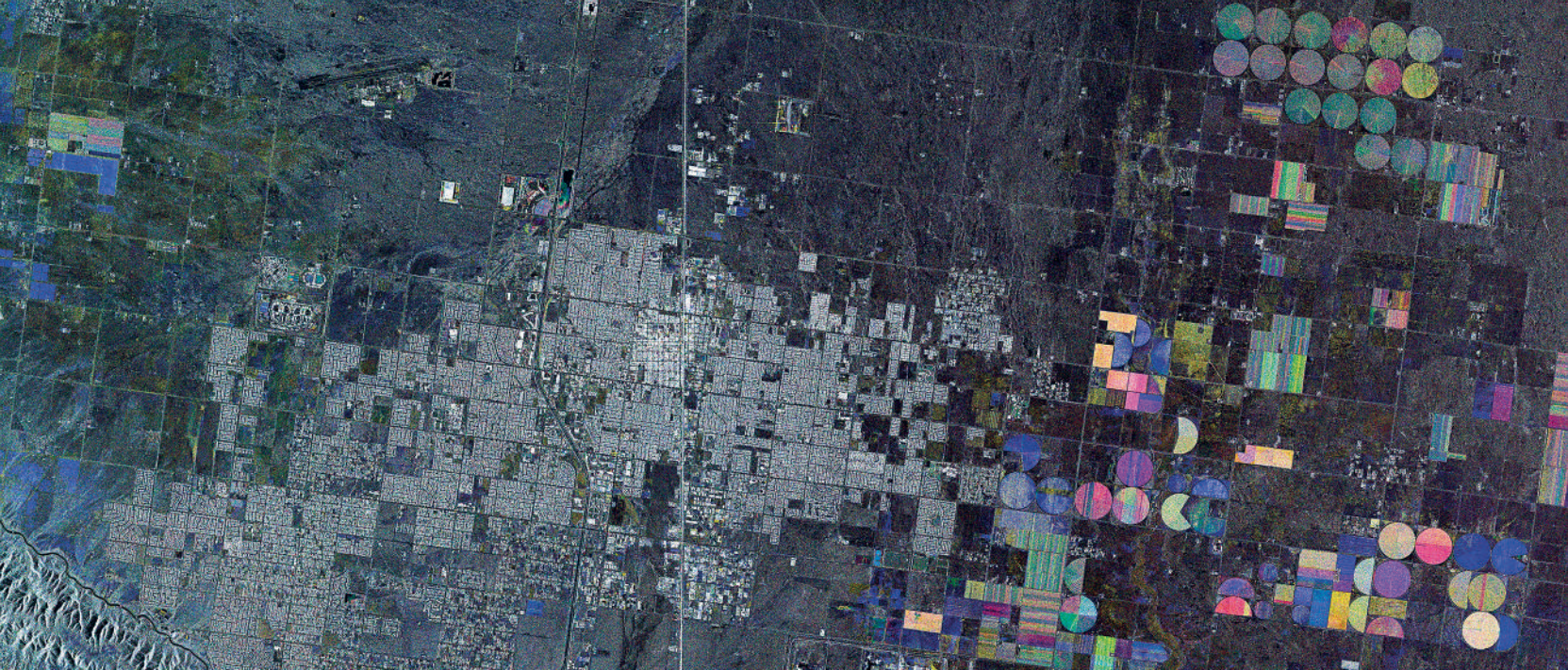




Rising temperatures and increasing acid levels in the oceans are gradually damaging the Australian coral reef, an essential habitat for a large number of marine species.

Great Barrier Reef, Australia. Deimos-2 image © Deimos Imaging, an UrtheCast Company





T	F	S	S	M	T	W	T	F	S	S	M	T	W	T	F	S	S	M	T	W							
1	2	3	4	5	6	7	8	9	10	11	12	13	14	15	16	17	18	19	20	21	22	23	24	25	26	27	28

FEBRUARY 2018

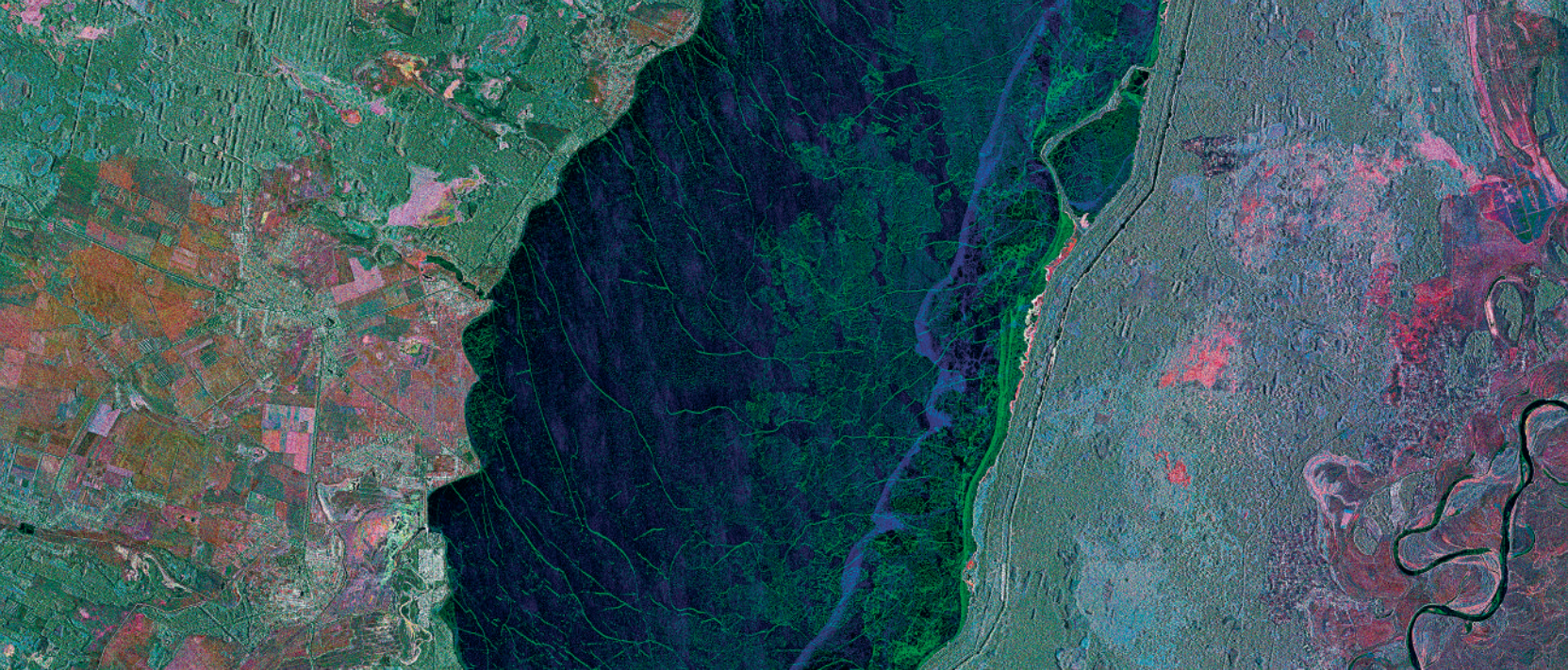




To make cultivation possible in desert areas, precious water reserves are exploited.

Mojave Desert, USA. COSMO-SkyMed image © ASI, Processed and distributed by e-GEOS

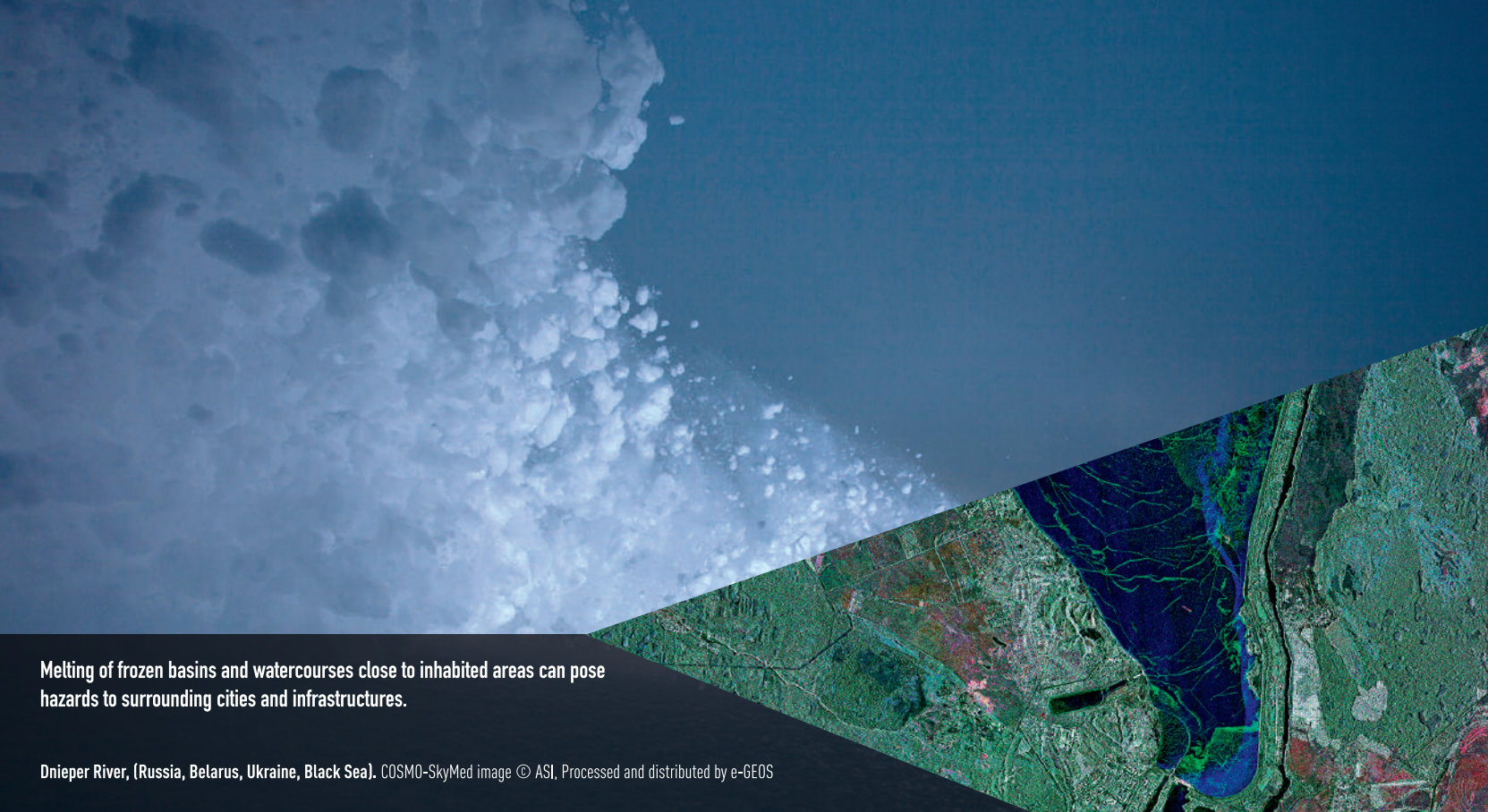




T	F	S	S	M	T	W	T	F	S	S	M	T	W	T	F	S	S	M	T	W	T	F	S	S	M	T	W	T	F	S
1	2	3	4	5	6	7	8	9	10	11	12	13	14	15	16	17	18	19	20	21	22	23	24	25	26	27	28	29	30	31

MARCH 2018

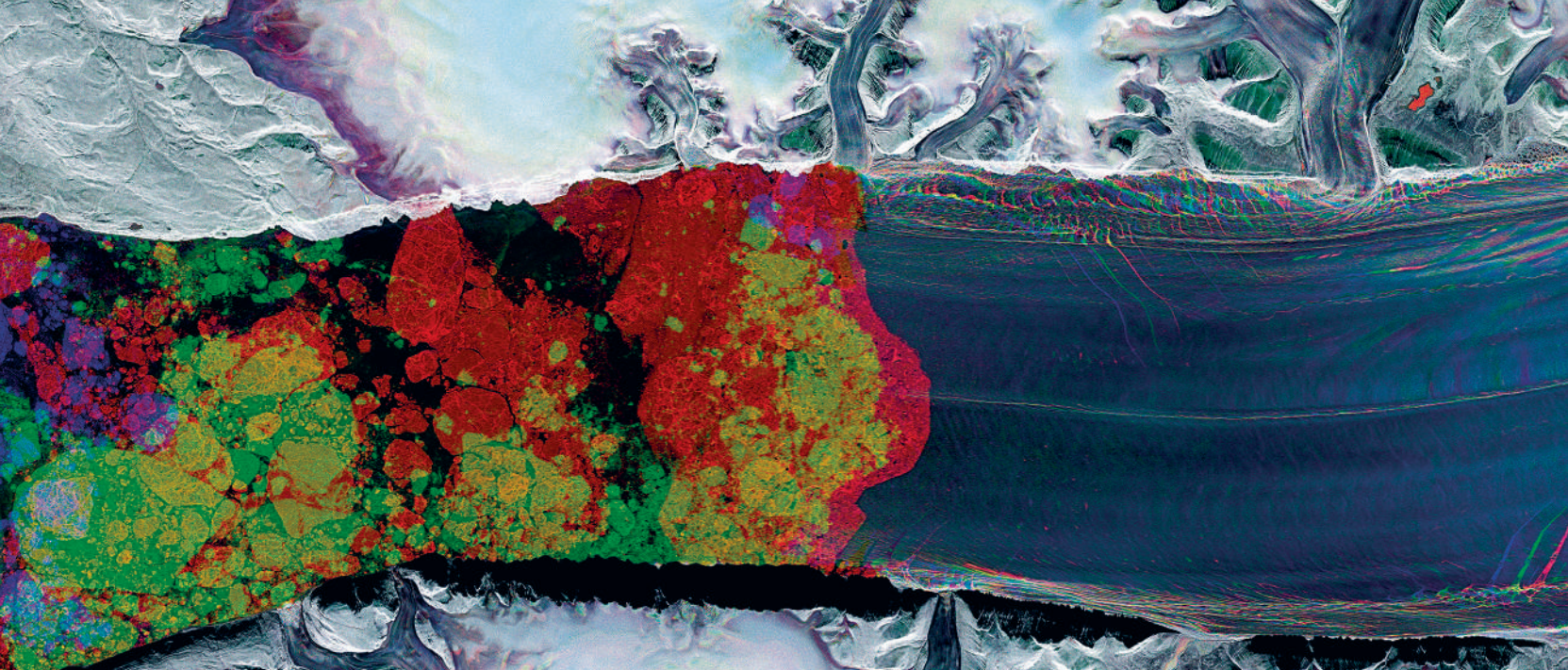




**Melting of frozen basins and watercourses close to inhabited areas can pose hazards to surrounding cities and infrastructures.**

**Dnieper River, (Russia, Belarus, Ukraine, Black Sea).** COSMO-SkyMed image © ASI, Processed and distributed by e-GEOS





S	M	T	W	T	F	S	S	M	T	W	T	F	S	S	M	T	W	T	F	S	S	M							
1	2	3	4	5	6	7	8	9	10	11	12	13	14	15	16	17	18	19	20	21	22	23	24	25	26	27	28	29	30

APRIL 2018





The speed at which glaciers move and melt has increased over the last 30 years.

Petermann Glacier, Greenland. COSMO-SkyMed image © ASI, Processed and distributed by e-GEOS





T	W	T	F	S	S	M	T	W	T	F	S	S	M	T	W	T	F	S	S	M	T	W	T	F	S	S	M	T	W	T
1	2	3	4	5	6	7	8	9	10	11	12	13	14	15	16	17	18	19	20	21	22	23	24	25	26	27	28	29	30	31

MAY 2018





The more remote and rich forests are, the more illegal deforestation activities increase.





F	S	S	M	T	W	T	F	S	S	M	T	W	T	F	S	S	M	T	W	T	F	S	S	M	T	W	T	F	S
1	2	3	4	5	6	7	8	9	10	11	12	13	14	15	16	17	18	19	20	21	22	23	24	25	26	27	28	29	30

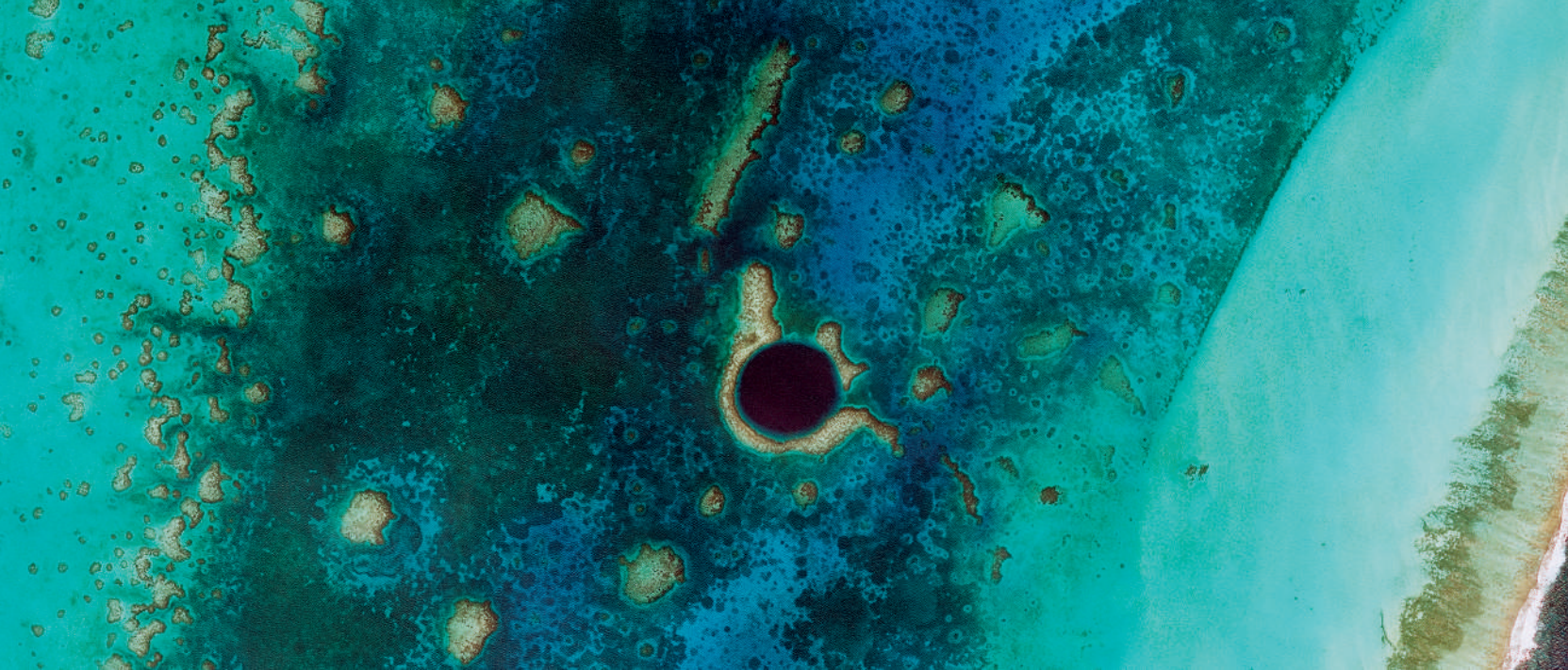
JUNE 2018





Forced diversion of waterways, even hotter climates, as well as the exploitation activities in agriculture and fishing, make some areas of the world increasingly dry and arid.

Aral Sea, Kazakhstan - Uzbekistan. Deimos-1 Image © Deimos Imaging, an UrtheCast Company



S	M	T	W	T	F	S	S	M	T	W	T	F	S	S	M	T	W	T	F	S	S	M	T							
1	2	3	4	5	6	7	8	9	10	11	12	13	14	15	16	17	18	19	20	21	22	23	24	25	26	27	28	29	30	31

JULY 2018

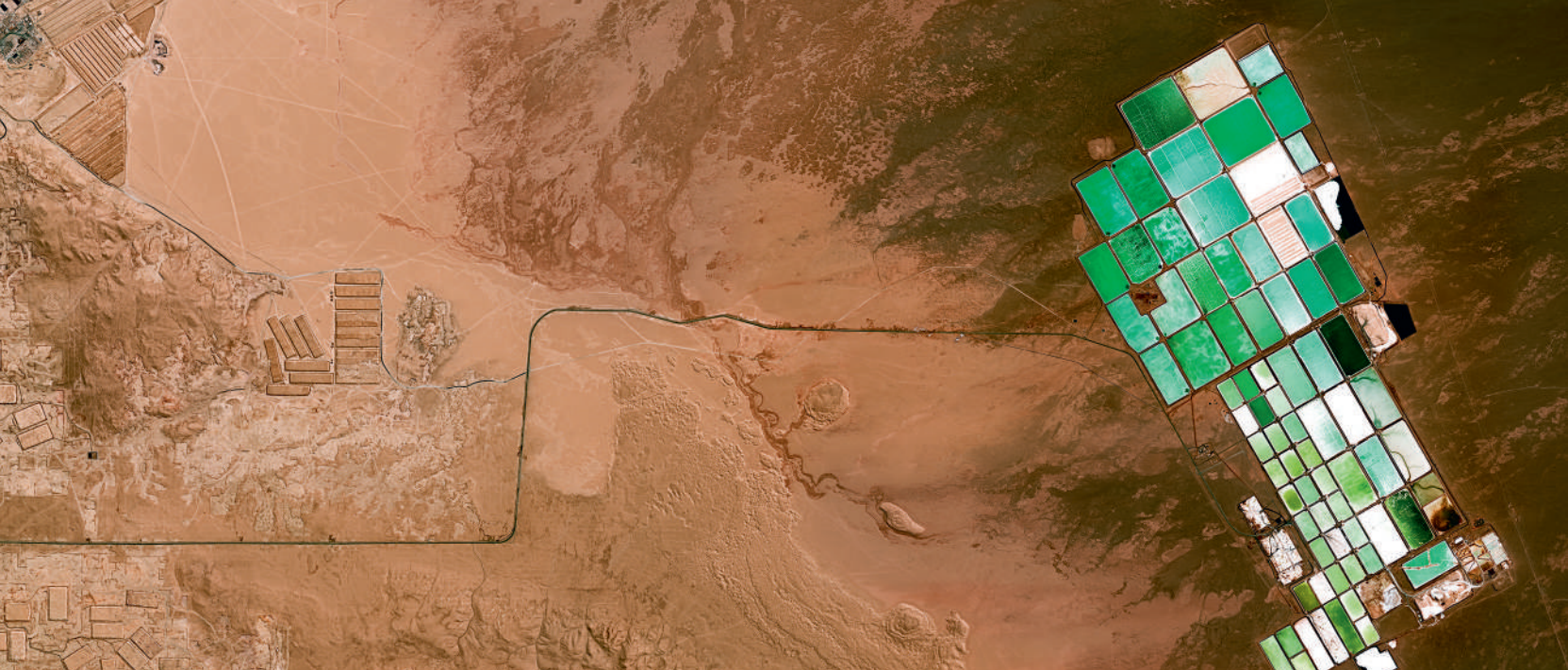




The Great Blue Hole provides evidence of the correlation between land, cultural transformation and climate change over the course of the geological eras.

Great Blue Hole, Belize. WorldView-2 image © DigitalGlobe





W	T	F	S	S	M	T	W	T	F	S	S	M	T	W	T	F	S	S	M	T	W	T	F							
1	2	3	4	5	6	7	8	9	10	11	12	13	14	15	16	17	18	19	20	21	22	23	24	25	26	27	28	29	30	31

AUGUST 2018





Even in the most remote desert regions, it is possible to mine for minerals and create a proliferation of extraction wells, in order to obtain the useful yield from the territory.

Atacama Desert, Chile. GeoEye1 image © DigitalGlobe





S	S	M	T	W	T	F	S	S	M	T	W	T	F	S	S	M	T	W	T	F	S	S							
1	2	3	4	5	6	7	8	9	10	11	12	13	14	15	16	17	18	19	20	21	22	23	24	25	26	27	28	29	30

SEPTEMBER 2018

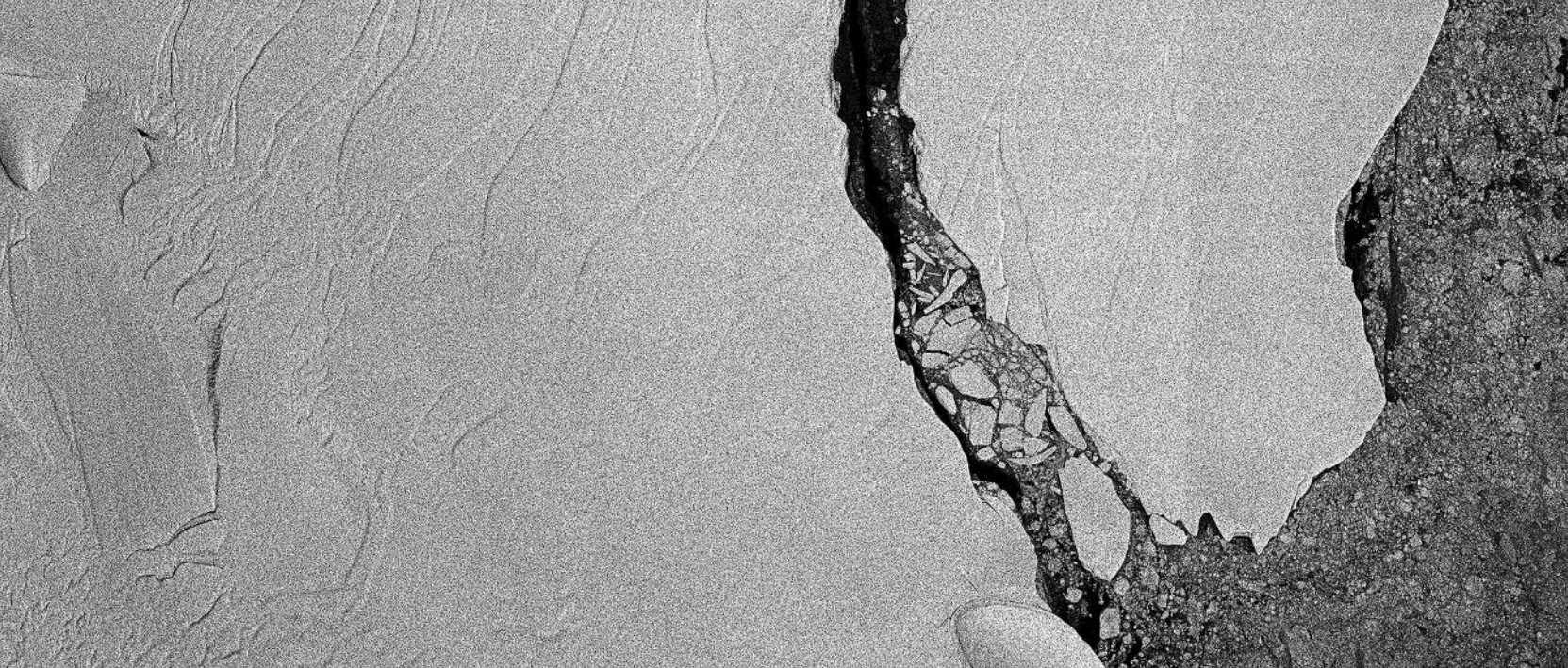




In recent years, climate change has given rise to a progressive increase in extreme weather phenomena, such as floods, thunderstorms and subsequent landslides.

Flood, Croatia. WorldView-2 image © DigitalGlobe





M	T	W	T	F	S	S	M	T	W	T	F	S	S	M	T	W	T	F	S	S	M	T	W							
1	2	3	4	5	6	7	8	9	10	11	12	13	14	15	16	17	18	19	20	21	22	23	24	25	26	27	28	29	30	31

OCTOBER 2018

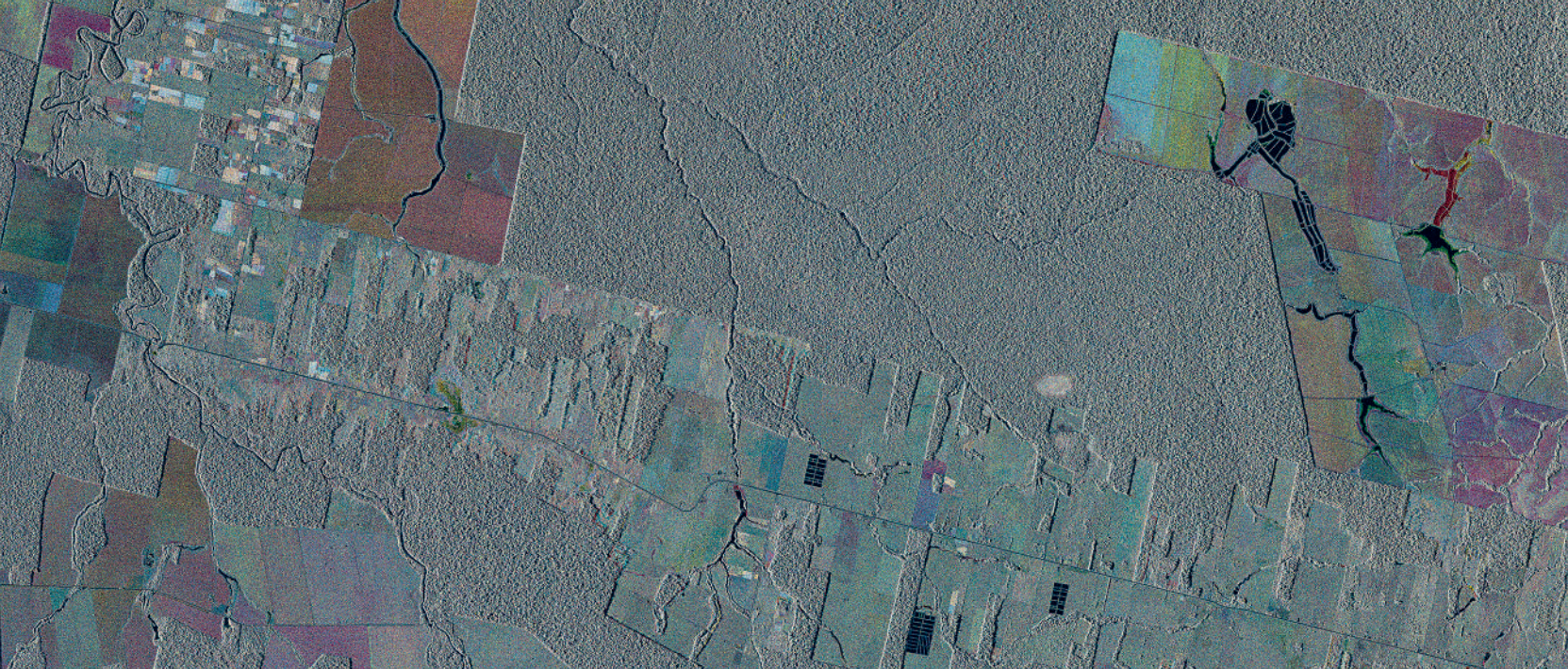




The detachment of portions of ice at the poles of various sizes is a phenomenon that has been observed for a long time. In recent years this has increased, most probably due to global warming.

Iceberg A-68, Larsen C, Antarctic. COSMO-SkyMed image © ASI, Processed and distributed by e-GEOS





T	F	S	S	M	T	W	T	F	S	S	M	T	W	T	F	S	S	M	T	W	T	F	S	S	M	T	W	T	F
1	2	3	4	5	6	7	8	9	10	11	12	13	14	15	16	17	18	19	20	21	22	23	24	25	26	27	28	29	30

NOVEMBER 2018





Forest fires cause carbon emissions, which, added to the man-made emissions, is creating a negative loop. In fact, healthy forests play a very important role in absorbing CO<sub>2</sub>.

Cujubim, Brazil. COSMO-SkyMed image © ASI. Processed and distributed by e-GEOS

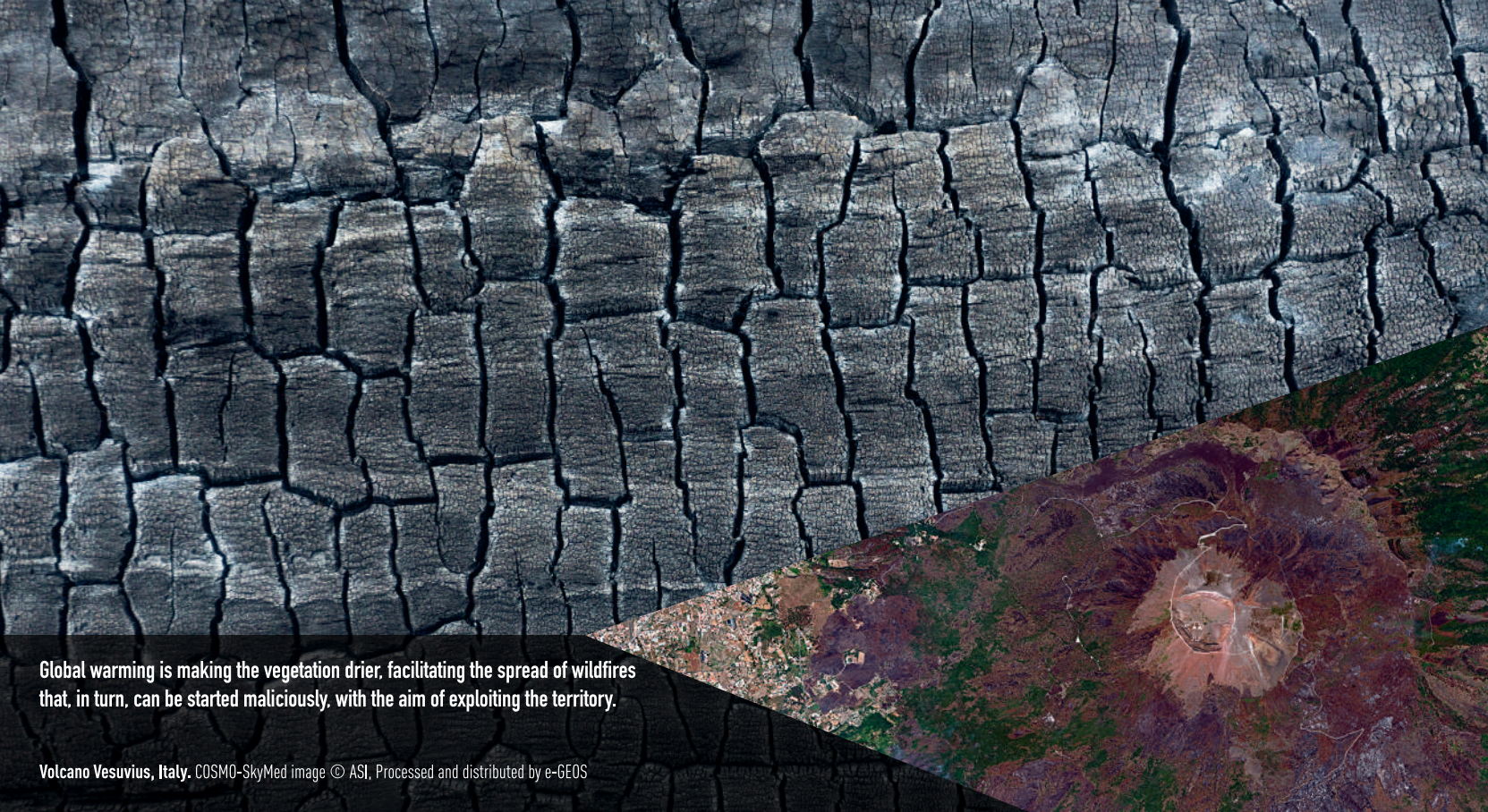




S	S	M	T	W	T	F	S	S	M	T	W	T	F	S	S	M	T	W	T	F	S	S	M							
1	2	3	4	5	6	7	8	9	10	11	12	13	14	15	16	17	18	19	20	21	22	23	24	25	26	27	28	29	30	31

DECEMBER 2018



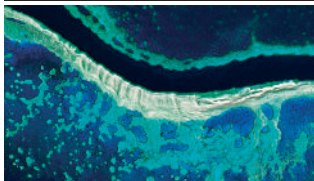


**Global warming is making the vegetation drier, facilitating the spread of wildfires that, in turn, can be started maliciously, with the aim of exploiting the territory.**

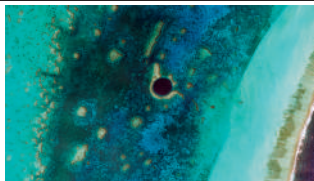
**Volcano Vesuvius, Italy.** COSMO-SkyMed image © ASI, Processed and distributed by e-GEOS



### SEA: the rising of level and temperature

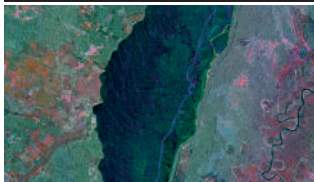


**Great Barrier Reef, Australia.** Deimos-2 image  
© Deimos Imaging, an UrtheCast Company

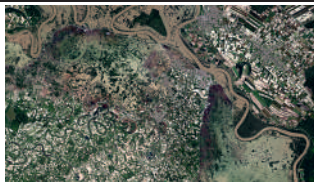


**Great Blue Hole, Belize.**  
WorldView-2 image © DigitalGlobe

### HUMAN SAFETY: nature variety and its impetuosity

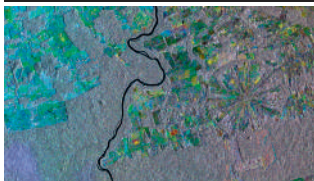


**Dnieper River, Russia.** COSMO-SkyMed image  
© ASI, Processed and distributed by e-GEOS

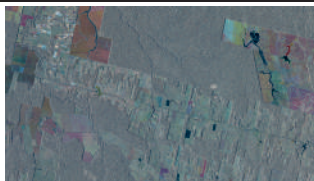


**Flood, Croatia.**  
WorldView-2 image © DigitalGlobe

### FOREST: cuts and deforestation

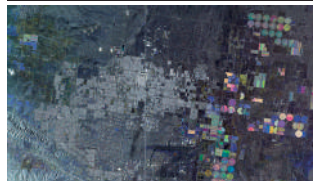


**Colniza, Mato Grosso, Brazil.** COSMO-SkyMed image  
© ASI, Processed and distributed by e-GEOS



**Cujubim, Brazil.** COSMO-SkyMed image © ASI,  
Processed and distributed by e-GEOS

### DESERTS: progress and exploitation

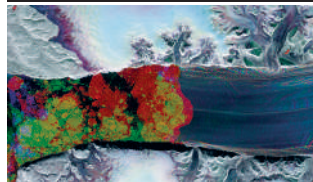


**Mojave Desert, USA.** COSMO-SkyMed image  
© ASI, Processed and distributed by e-GEOS



**Atacama Desert, Chile.**  
GeoEye1 image © DigitalGlobe

### POLES: melting ice and icebergs drift



**Petermann Glacier, Greenland.** COSMO-SkyMed image  
© ASI, Processed and distributed by e-GEOS

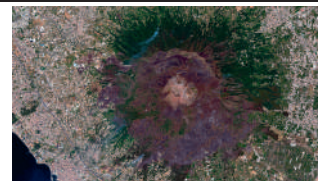


**Iceberg A-68, Larsen C, Antarctica.** COSMO-SkyMed image  
© ASI, Processed and distributed by e-GEOS

### DROUGHT: aridity and land use



**Aral Sea, Kazakhstan - Uzbekistan.** Deimos-1 Image  
© Deimos Imaging, an UrtheCast Company



**Volcano Vesuvius, Italy.** COSMO-SkyMed image  
© ASI, Processed and distributed by e-GEOS